

Check Device Communication

You should test the communication between a device and TurningPoint if an audience member's response is not being accepted during a live presentation. Radio Frequency and vPad response devices provide on-screen confirmation that responses have been received. For infrared response devices, the use of a Response Grid will help to alert you of a non-communicating device. Find more information in **View Polling Status** on page 201.

Before You Begin

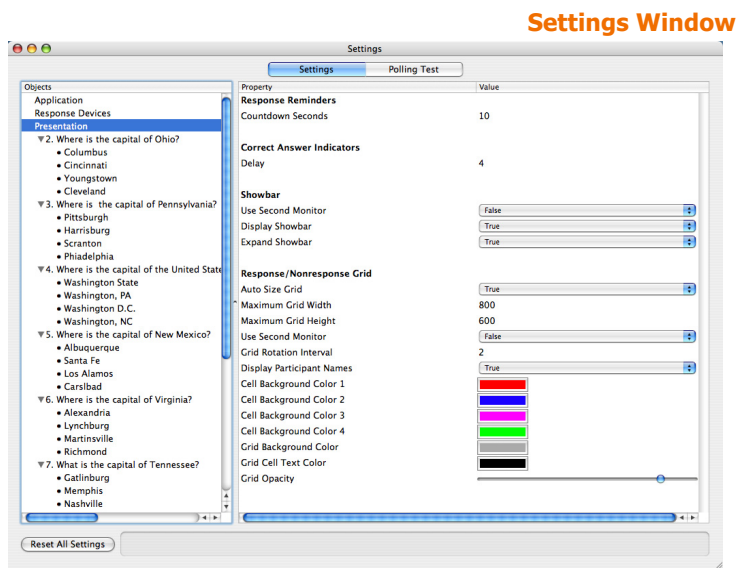
Ensure the device receiver is properly installed and the device to be tested is available.

Step by Step Instructions

- 1 From the TurningPoint toolbar, select Tools > Settings.

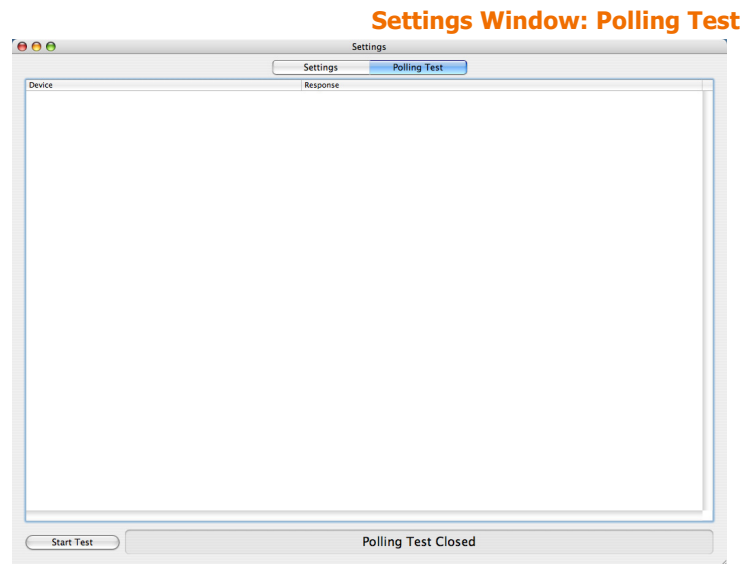
To test for device communication...

The Settings window opens.



2 Select Polling Test.

TurningPoint displays the Polling Test window. Use this window to verify that TurningPoint can receive responses from the devices.



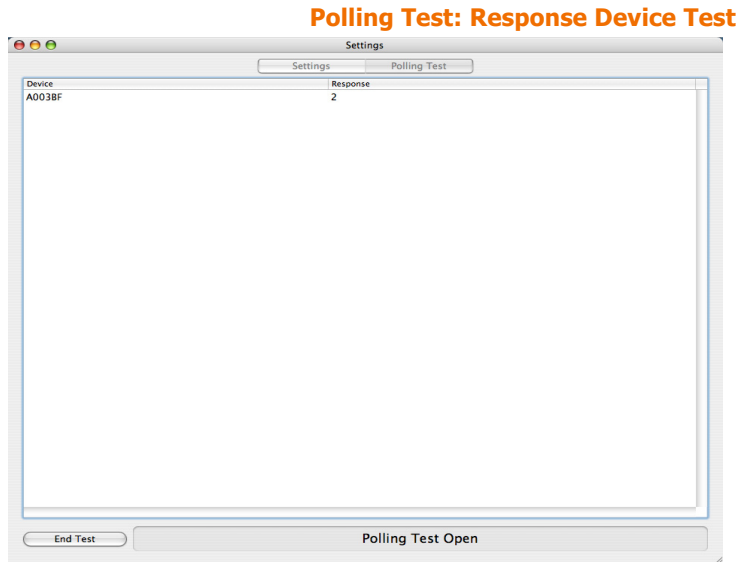
3 Select the Start Test button.

TurningPoint is now ready to accept responses from the response devices.

Chapter 4: Response Device and Settings Management

- 4 Press a key on each response device to be used.

TurningPoint displays the Device ID, and the key entry from each response device in the order in which they were tested.



- 5 Select the End Test button.

TurningPoint ends Polling test.

- 6 Close the Settings window.

The device communication check is now complete.

Identify the Number of Devices to be Used

Access the Response Device settings whenever you need to change the number of expected devices. TurningPoint uses the number of expected devices when choosing Simulated Data.